

## Product catalogue | 2016



ENGLISH



## INNOVATIVE SOLUTIONS FROM BERGISCH GLADBACH

As a young and emerging company with their headquarters in Bergisch Gladbach and their branch for development, production and sales in Minden, DEUTA Controls GmbH develops, produces and sells innovative products for the building automation market. Besides their own products, also full customer specific development, products and systems belong to our portfolio.

As a subsidiary company of DEUTA-WERKE GmbH from Bergisch Gladbach, which have more than 100 years of knowledge and experience in the railway automation market, we are obliged to develop and produce also quite reliable and high quality products for our customers.

With our own development and production team, we are always capable to react immediately to common requests from the market and to special requirements from our customers as well.

Special-purpose solutions in small volumes, technology guidance, project support and commissioning are part of our main business.



„Our products are reliable, innovative and flexible to use. Based on this, we provide you solutions for your project, starting at the product delivery, and ending up with supporting you in planning, projecting and bring-up of the control system, depending on your needs.“

Michael Lehzen, CEO of DEUTA Controls GmbH



**DEUTA Controls GmbH**

Give us a call! Tel.: +49 (0) 2202 285 57-61

## PRODUCTS AND SERVICES

LIGHT CONTROLLER, FIXED FUNCTIONALITY	_____	PAGE 04 - 05
LIGHT CONTROLLER, FREE CONFIGURABLE	_____	PAGE 06 - 09
OPERATION AND MONITORING	_____	PAGE 10 - 11
GATEWAYS AND ADAPTERS	_____	PAGE 12 - 13
SOFTWARE	_____	PAGE 14 - 15
SWITCHES AND SENSORS	_____	PAGE 16 - 17
ACCESSORIES	_____	PAGE 18 - 19
SERVICES	_____	PAGE 20 - 21





## BL-201-00-868 / BL-202-00-868 BROADCAST

For basic applications, when the illumination of a whole area just has to be switched and dimmed, we offer an extra simple solution. The EnOcean-DALI-Controller with the option „00“ own everything you need for this task, without any further components or PC-configuration.



## Functions and features:

- ON/ OFF / DIM via DALI BROADCAST, fixed functions
- integrated 230V power supply unit
- integrated DALI power supply unit for up to 15 or 17 slaves
- EnOcean radio-receiver for receiving the signals of the light switch
- DALI Master to control DALI-compatible lights and EVG (ballasts)
- Service-Push-Button for EnOcean light switches programming

## Areas of application:

These controllers are used e.g. in conference rooms or offices, where the essential functions „ON / OFF / DIM“ are combined with the advantages of the wireless and therefore free placeable EnOcean-light switches.

Furthermore these controllers are often mounted directly in the lamp. You can choose among two housing types, depending on space requirements.



Conference room, cove lighting  
no group controlling



Entrance and und reception area, operation via  
4 switches at different entrance / exit doors

Part Number: 11042  
 Short Text: BL-201-00-868 UP BROADCAST  
 Functions: ON / OFF / DIM of all DALI ballasts via BROADCAST,  
 light switches programming with service button at the device, without any software.  
 Interfaces: EnOcean, DALI, 230V AC  
 Measurements: approx. 51 x 51 x 33 mm, e.g. suitable for in-wall housing  
 Protection class: IP20  
 Output current DALI: max. 34mA (up to 17 DALI EVG/slaves/ballasts,  
 up to 64 with additional DALI power supply unit)



Part Number: 11622  
 Short Text: BL-202-00-868 EVG BROADCAST  
 Functions: ON / OFF / DIM of all DALI ballasts via BROADCAST,  
 light switches programming with service button at the device, without any software  
 Interfaces: EnOcean, DALI, 230V AC  
 Measurements: approx. 145 x 21 x 18 mm, e.g. suitable for mounting in lamps or luminaire profiles  
 Protection class: IP20  
 Output current DALI: max. 30mA (up to 15 DALI EVG/slaves/ballasts,  
 up to 64 with additional DALI power supply unit)



## EnOcean-DALI-Controller FLEX



We developed our FLEX products for the application areas with an increasing amount of controlling tasks. All EnOcean-DALI-Controller with the option FLEX are free configurable. With our self developed PC configuration software BL-PC-FLEX, you are able to set up the whole DALI configuration and adjust the functionality of your control system at any time wireless via you PC.



### Functions and features:

- Free configurable functions, wireless via PC software BL-PC-FLEX and EnOcean USB stick
- integrated 230V power supply unit
- integrated DALI power supply unit for up 15 or 17 slaves
- EnOcean radio-receiver for receiving the signals of the light switch
- DALI Master to control DALI-compatible lights and EVG (ballasts)

### Areas of application:

These FLEX controllers are actually used in many projects where energy saving is in focus, and motion detectors and daylight sensors are used with our controllers.

In addition, our FLEX controllers allow you to change the configuration later on, at any time, based on the wireless connection, to change switch or group assignement.

Also scene values can be adopted easily with our PC tool.



Open plan office, ceiling illumination can be switched as groups



Entrance hall, ceiling illumination with daylight adjustment



### Essential features and functions of all EnOcean-DALI-Controllers with the option FLEX:

- Wireless configurable via PC configuration software BL-PC-FLEX and EnOcean USB-Stick
- Easy DALI addressing with drag & drop
- Generating of DALI groups and scenes with easy input mask
- Easy assignment of EnOcean switches and push-buttons to functions like ON / OFF / DIM, or certain scenes
- Integration of wireless motion detectors via EnOcean
- Up to 16 free configurable timer per controller for time-based processes, e.g. stopping time
- Supports brightness sensors to control the DALI ballasts DIM level depending on the daylight.
- An unique adaption curve can be assigned to each DALI address
- All sensors can be blocked or unblocked at any time, to support either automatic or manual operation



EnOcean light switches, push-buttons,  
e.g. ELTAKO, GIRA, JUNG, MERTEN



Motion controller, e.g.  
DEUTA Controls



Sensor for daylight, e.g.  
ELTAKO



Configuration is very comfortable via PC tool BL-PC-FLEX.  
This is only necessary for set-up. All controllers operate completely self-sufficient.



## EnOcean-DALI-Controller with FLEX option

The following devices provide the entire performance range of the option FLEX. Only the mounting form is different and consequently they provide solutions for the different fields of application.

Part Number:	11214
Short Text:	BL-201-10-868 UP FLEX
Functions:	Free configurable light controller, PC software BL-PC-FLEX necessary
Interfaces:	EnOcean, DALI, 230V AC
Measurements:	approx. 51 x 51 x 33 mm, e.g. suitable for in-wall mounting
Protection class:	IP20
Output current DALI:	max. 34mA (up to 17 DALI EVG/slaves/ballasts, up to 64 with additional DALI power supply unit)



Part Number:	11329
Short Text:	BL-202-10-868 EVG FLEX
Functions:	Free configurable light controller, PC software BL-PC-FLEX necessary
Interfaces:	EnOcean, DALI, 230V AC
Measurements:	approx. 148 x 21 x 19 mm, e.g. suitable for mounting in luminaire profiles
Protection class:	IP20
Output current DALI:	max. 30mA (up to 15 DALI EVG/slaves/ballasts, up to 64 with additional DALI power supply unit)



Part Number:	11236
Short Text:	BL-201-12-868 ERCO FLEX
Functions:	Free configurable light controller, PC software BL-PC-FLEX necessary
Interfaces:	EnOcean, DALI, 230V AC
Measurements:	Passend zum Einrasten in DALI Lichtschiene Hersteller ERCO (3-Phasen-Stromschiene)
Protection class:	IP20
Output current DALI:	max. 34mA (up to 17 DALI EVG/slaves/ballasts, up to 64 with additional DALI power supply unit)





**Part Number:** 11339  
**Short Text:** BL-201-18-868 EUTRAC FLEX  
**Functions:** Free configurable light controller, PC software BL-PC-FLEX necessary  
**Interfaces:** EnOcean, DALI, 230V AC  
**Measurements:** Suitable for EUTRAC 3-phases light track with data bus  
**Protection class:** IP20  
**Output current DALI:** max. 30mA (up to 15 DALI EVG/slaves/ballasts, up to 64 with additional DALI power supply unit)



**Part Number:** 11237  
**Short Text:** BL-201-13-868 AP FLEX  
**Functions:** Free configurable light controller, PC software BL-PC-FLEX necessary  
**Interfaces:** EnOcean, DALI, 230V AC  
**Measurements:** approx. 151 x 117 x 67 mm,  
**Protection class:** IP40  
**Output current DALI:** max. 250mA (up to 64 DALI EVG/slaves/ballasts)



**Part Number:** 11301  
**Short Text:** BL-201-15-868 AP FLEX DALI-PS IP65  
**Functions:** Free configurable light controller, PC software BL-PC-FLEX necessary  
**Interfaces:** EnOcean, DALI, 230V AC  
**Measurements:** approx. 151 x 117 x 67 mm, without M cable glands  
**Protection class:** IP67  
**Output current DALI:** max. 250mA (up to 64 DALI EVG/slaves/ballasts)



**Part Number:** 11303  
**Short Text:** BL-201-17-868 AP FLEX DALI-PS  
**Functions:** Free configurable light controller, PC software BL-PC-FLEX necessary  
**Interfaces:** EnOcean, DALI, 230V AC  
**Measurements:** approx. 151 x 117 x 67 mm, without M cable glands  
**Protection class:** IP40  
**Output current DALI:** max. 250mA (up to 64 DALI EVG/slaves/ballasts)



## EnoCube - EnOcean Meets Touch

for Android, iOS and Windows



**NEW  
PRODUCT**

If you prefer to operate via smartphone or tablet, in order to replace or to complete conventional light switches, the EnoCube is the ideal choice.

At first you connect your PC via WiFi with the EnoCube and generate websites with push-buttons for your lightning, fast and easy. The EnoCube acts as an access point, you don't need an existing network.

Then you connect your device (iOS, Android, Windows) with the EnoCube via WiFi. There you find the available client-apps disposed to download. Now the generated websites with the control elements are ready to use. The EnoCube transmits the push-button signals to the controller, like a „real“ EnOcean light switch would do.



### Functions and features:

- Free configurable websites with virtual EnOcean light switches
- Integration of graphic backdrops
- Push-buttons which can be custom-labeled
- Supply voltage 24V DC
- Communication via USB-Sticks for WLAN and EnOcean (both included in delivery)

### Areas of application:

The EnoCube is applied wherever you want to combine touch operating and common light switches. This includes e.g. shops, museums, hotel business and office buildings.

Part Number:	11614
Short Text:	BL-230-02-868 EnoCube
Functions:	Webserver for touch operating via EnOcean,
Interfaces:	EnOcean and WLAN via USB, 24V DC
Measurements:	approx. 100 x 30 x 97 mm
Protection class:	IP20
Environmental temperature:	0- +45°C, no condensation



## Control unit

Our VL-3104 is an extremely powerful panel-PC with 10.4" display, a capacitive Multi-Touch sensor and a longlife LED-background-lighting.

The device with an Intel Atom D2550 Dual-Core-CPU with 1.86 GHz, comes along with two Gigabit Ethernet LAN-Interfaces, a fully provided Standard-RS-232 (COM2) and a multifunctional COM1 (RS-232/RS-422/RS-485 half-duplex/RS-485 full-duplex). The Panel-PC has an integrated SSD for data storage. The complete glass front of the VL-3104 consists of special glass that is non-reflective and a special etching treatment reduces reflections and prevents fingerprints. It is available in black or white. The housing consists of aluminium and it is made for switchboard-mounting or for in-wall mounting (combined with the in-wall-installation set). The device is delivered with pre-installed operating system Windows 7 on a 60 GB SSD.



Part Number:	11031
Short Text:	VL-3104-Black
Functions:	Multi-Touch Panel PC, series VL, 10.4" TFT, full glass front, Intel Atom D2550, Dual-Core 1.8 Ghz, 4 GB RAM, 60 GB SSD, frameless design, no fan, at the front IP65, black, Windows 7 pre-installed,
Measurements:	322 x 256 mm
Protection class:	Front IP 65, back IP20
Environmental temperature:	-20° - +70°C, no condensation





## BL-211-00-868

### Adapters for standard switches



If you like to use common switches without EnOcean interface, you can use our adapters. So you can connect light switches and push-buttons from third-party manufacturers with our EnOcean-DaI-Controllers for your project



#### Functions and features:

- 230V AC supply voltage
- Push-button at the device changes between switch and push-button mode
- Transfers switch signal into EnOcean radiogram

#### Areas of application:

Everywhere you can't use the available EnOcean lightswitch product series due to design reasons



Part Number:	11302
Short Text:	BL-211-00-868 UP SWITCH
Functions:	Conversion of standard make contact into EnOcean radiogram. Push-button at the device changes between switch and push-button mode.
Interfaces:	EnOcean, 230V AC
Measurements:	approx. 51 x 51 x 33 mm, e.g. suitable for in-wall mounting
Protection class:	IP20



## BL-212-00-868

### Adapter for standard motion controllers



If you want to use common motion detectors without EnOcean interfaces, you can install our easy adapters.

These enable you to combine any motion or presence detectors from third-party manufacturers with our EnOcean-DALI-Controllers for your project.

#### Functions and features:

- 230V AC supply voltage, connected with the sensors switching output.
- Transfers the signal into EnOcean radiogram of a motion sensor.

#### Areas of application:

Everywhere you can't use the available EnOcean sensors series due to design or functionality reasons.



Part Number:	11305
Short Text:	BL-212-00-868 UP MOTION
Functions:	Transfers standard switching output 230V AC into EnOcean telegram; taught by service-push-button at the device
Interfaces:	EnOcean, 230V AC
Measurements:	approx. 51 x 51 x 33 mm, e.g. suitable for in-wall mounting
Protection class:	IP20

## BL-PC-FLEX

PC configuration software for EnOcean-DALI-Controller with FLEX



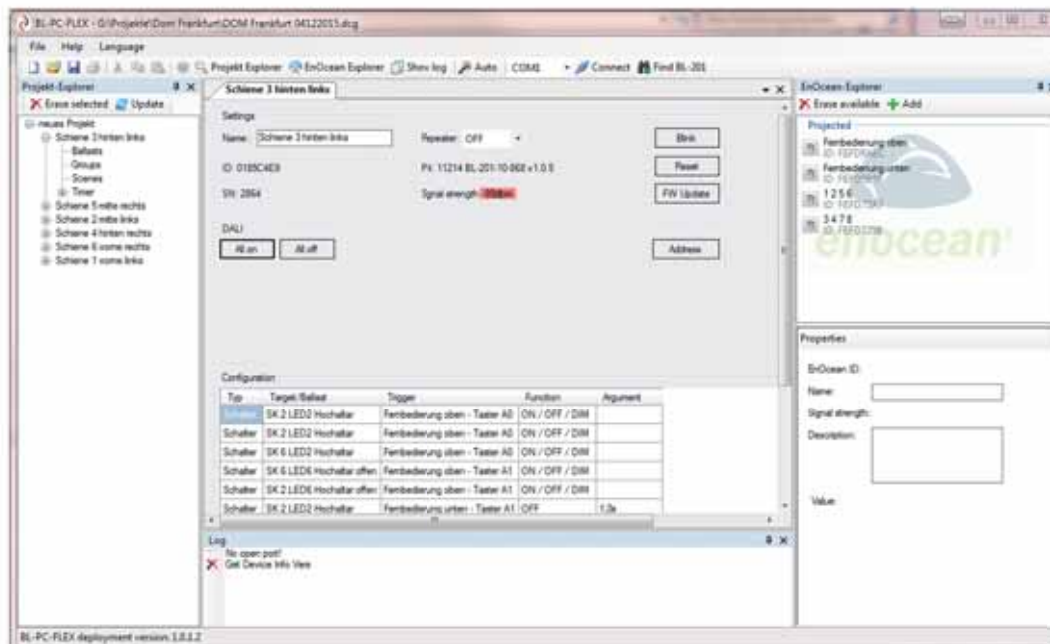
With our self developed PC configuration software BL-PC-FLEX you are able to set up all of our EnOcean-DALI-Controllers with the option „FLEX“ wireless and very comfortable. This software supports the following features:

- Easy DALI-addressing with drag & crop
- Generating of DALI groups and scenes with easy input masks
- Random assignment of EnOcean switches and push-buttons to functions like ON / OFF / DIM, or certain scenes
- Integration of wireless motion detectors via EnOcean
- Up to 16 free configurable timer per controller for time-based processes, e.g. stopping time
- Supports brightness sensors to control DIM level of each DALI ballast depending on the daylight
- An unique adaption curve can be assigned to each DALI address
- All sensors can be blocked or unblocked at any time, to support either automatic or manuel operation

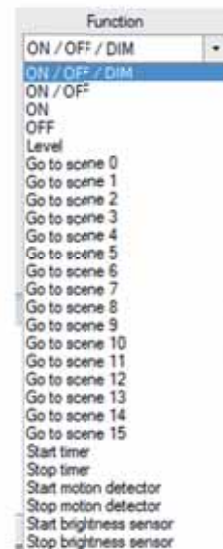


Part Number:	11228
Short Text:	BL-PC-FLEX, setup kit for PC
Shipment:	Set consisting of PC software and EnOcean USB-Stick, 868 MHz
Functions:	Wireless configuration of all FLEX EnOcean-DALI-Controllers





Standard operating window area of BL-PC-FLEX configuration programm:  
DALI on the left, EnOcean on the right, configuration window in the middle



Many functions available, most of them can be assigned to a switch/sensor simultaneously



Controlling, dependent on the daylight: An unique adaption curve of the dim level can be assigned to each DALI address (ballasts, group or BROADCAST) (Offset, with negativ or positiv gradient).

## WIRELESS LIGHT SWITCHES - AND SENSORS

Here we offer our own products as well as third-party products available at the market, that are continuously qualified and tested by our staff.

You take absolutely no risks, our development department has already approved all components and our customers have applied them before in many successful projects.

Part Number :	11552
Short Text:	AL-231-00-868 AP 3+1 EnOcean control unit, IP65
Functions:	3 push-buttons: red / yellow / white and 1 keyswitch (momentary, not latching) (key removable in 0-position), EnOcean 868 MHz
Interfaces:	EnOcean, completely self-sufficient, no batteries or power supply needed
Protection class:	IP67



Part Number:	11191
Short Text:	Wall motion detector EnOcean/Solar 868 MHz
Functions:	Energy self-sufficient motion detector with integrated solar cell additional internal back-up batterie CR2032
Interfaces:	EnOcean 868 MHz
Measurements:	approx. 166 x 50 x 40 mm, for on-wall mounting
Protection class:	IP20



Part Number: 11256  
 Short Text: AL-220-00-868 EnOcean push-button AP IP65, 230V AC,  
 Functions: Push button EnOcean, IP65, housing for on-wall mounting  
 Interfaces: EnOcean, 230V AC  
 Measurements: approx. 72 x 110 x 68 mm  
 Protection class: IP67  
 Note: Supply voltage 230V AC required



Part Number: 11284  
 Short Text: Brightness sensor EnOcean, daylight, 0-2000 lux  
 Functions: Brightness sensor EnOcean, 0 - 2000 Lux  
 Measures daylight, no artificial light, like e.g. LED  
 Reports every 100 seconds at a min. of 10 Lux difference  
 Interfaces: EnOcean  
 Measurements: approx. 84 x 84 x 30 mm  
 Protection class: IP54, housing for on-wall mounting



Part Number: 11540  
 Short Text: Brightness sensor EnOcean, daylight, 0-30.000 lux  
 Functions: Brightness sensor EnOcean, 0 - 30.000 Lux  
 Measures daylight, no artificial light, like e.g. LED  
 Reports from 300 Lux at a min. of 500 Lux difference after 10 seconds  
 Control report every 100 seconds  
 Interfaces: EnOcean  
 Measurements: approx. 84 x 84 x 30 mm  
 Protection class: IP54



Part Number: 11511  
 Short Text: Indoors Brightness sensor EnOcean 0-1000 lux  
 Functions: Brightness sensor EnOcean, 0 - 1000 Lux  
 Measures daylight and artificial light, like e.g. LED  
 Reports every 5 seconds at a min. of 4 Lux difference.  
 Control report every 100 seconds  
 Interfaces: EnOcean  
 Measurements: approx. 84 x 84 x 30 mm  
 Protection class: IP40



Photos brightness sensors: Eltako





LED Light panel with DALI



Part Number: I 1326  
 Short Text: LED Light panel 620 mm, max. 48 Watt  
 4000lm, 4000K, CRI >80  
 Interfaces: DALI, 230V AC  
 Measurements: 621 x 621 x 40 mm,  
 Protection class: IP20  
 Weight: 3600 g



Part Number: I 1051  
 Short Text: Wireless push-button EnOcean white  
 Interfaces: EnOcean 868 MHz  
 Measurements: 80 x 80 mm outside  
 Protection class: IP20  
 Single rocker and double rocker,  
 both enclosed



Part Number: I 1274  
 Short Text: Mini radio hand-held transmitter EnOcean,  
 aluminium / grey, 8 push-buttons  
 Interfaces: EnOcean 868 MHz  
 Measurements: 82 x 44 x 20 mm  
 Weight: 60 gram  
 Protection class: IP20  
 no batteries required!



Part Number: I 1363  
 Short Text: Female cable connector 5 pole, 230V AC + DALI  
 e.g. for connecting BL-201-17-868 AP FLEX  
 system WIELAND, coded  
 Connection internal: Screw terminals  
 Protection class: IP20

Photos Switch: Eltako, Connector: WIELAND

DEUTA Controls GmbH

Give us a call! Tel: +49 (0) 2202 285 57-61

Part Number:	11203
Short Text:	Male cable connector 5 pole 230V AC + DALI e.g. for connecting BL-201-17-868 AP FLEX system WIELAND, coded
Connection internal:	Screw terminas
Protection class:	IP20



### Consulting and support

If you have any question concerning our products, our development and distribution staff members are available via email or telephone anytime. We would like to advise you on development and realisation of your projects with our products.



### TRAINING



### Training and practice

We naturally offer support in the context of a hands-on training at our place or at your place in the desired range on request. At last afterwards the BL-PC-FLEX software operation and the handling of our controllers will be very easy for you.

### Project work and implementing on-site

As required we support the project work and implementing on-site. We have a lot of experience from a multitude of projects, so we are able to bring your project into service straight away.



Any questions? We're here for you!



+49 (0)2202 28557-61



info@deuta-controls.de



www.deuta-controls.de

Note: Subject to errors and technical modifications!  
The contents of this catalogue have been assembled with greatest care and are in line with our current level of information. The current catalogue replaces all previous catalogues. Issued February 2016.

## Order management, purchasing, headquarters

DEUTA Controls GmbH  
Paffrather Straße 140  
51465 Bergisch Gladbach  
GERMANY  
Tel.: +49 (0) 2202 28557 - 61  
Fax: +49 (0) 2202 28557 - 79  
E-Mail: info@deuta-controls.de

## Sales, development, production

DEUTA Controls GmbH  
Graßhoffstraße 29a  
32425 Minden  
GERMANY  
Tel.: +49 (0) 571 64 56 58 10  
Fax: +49 (0) 571 64 56 58 28